



Automatic gate openers on designed for vehicular traffic. They are powerful and can cause serious bodily injury or death. According, direct all pedestrian traffic to a separate walk through gate.

1-Technical Specifications :

Model	BS-206-(AC)
Power supply	220VAC 50Hz
Motor's power	90W 220VAC
Max length of boom	6m
Time for up/down	1.6S (for 1-2m) 4S (for3-4m) 6S (for6m)
Environment temperature	-20°C~50°C
Protection class	IP55

2- Control Board for 220V/AC :



***Input terminals :**

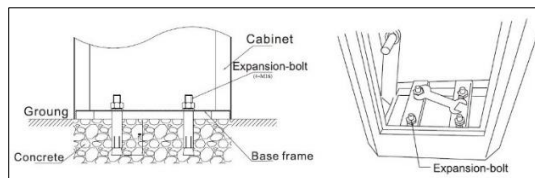
- Photo cell,Air wave switch,
- Loop detector,Toll gate system .

***Output terminals :**

- Motor,Lamp

3- Installing and adjusting :

***Installe the machine on the ground :**



***Install boom :**

