

FR1200

FR1200, a fingerprint reader with RS485 communication interface works with biometric access controllers and fingerprint standalone access control, including inBIO series controllers, F8 and so on. It offers the function of capturing and transferring fingerprint samples to access control panel. With its IP65 rated rugged structure, FR1200 offers extra durability in all weather conditions including outdoor environments.



Specifications

CPU

324MHz

Sensor

ZK small-sized sensor

Communication

RS485

Standard Function

ID Card Module

Optional Function

MF Card Module

Voice Prompt

Buzzer

Working Voltage

12VDC

Working Temperature

°C ~ °45C

Protection Grade

IP65

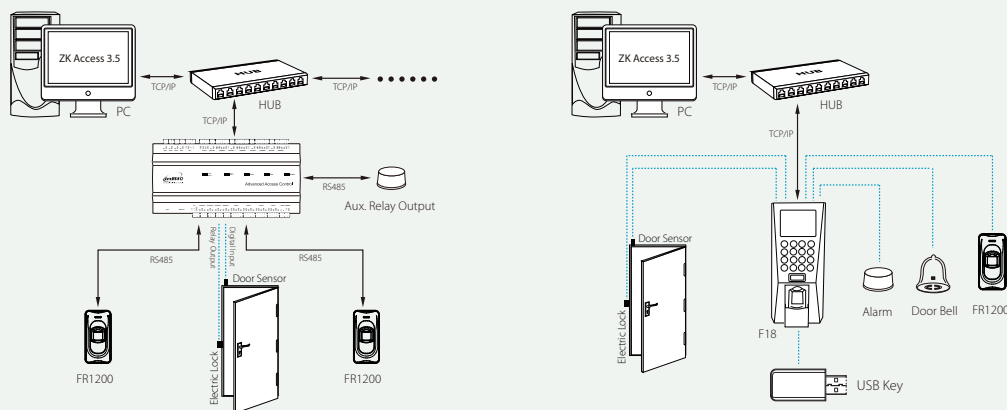
Size

Height: 102mm

Width: 50mm

Depth: 37mm

Configuration



ZKTeco Inc.

ZK Mansion, Wuhe Rd, Gangtuo, Bantian, Buji Town,
Longgang District, Shenzhen China 518129
Tel: 48/47/46/2345 8960-755-86
E-mail: sales@zkteco.com
www.zkteco.com

Global Offices:

USA: + 6007-412-732 1
EU: 916532891 34+
Brazil: 8326-2515 31 55+
Thailand: 027199154-66+
Mexico: 52928418-55-52+

South Africa: 1047 259 12 27+
Egypt: 201110444134+
Dubai: 310 6091 4 971+
India: 8123536788 91+
Indonesia: 8949 2921 21 62+

Vietnam : 5813007-0169-84+
Philippines: 9084118832 63+
Russia: 81-46-178 915 8+